

Specifications

备注 (Remark)

1. 材料 (MATERIAL)

胶芯: PA6T+30%G.F UL94V-0, 颜色: 黑色.

Housing: PA6T+30%G.F UL94V-0, Color: Black

四方针: 黄铜, 镍底30u"MIN, 表面镀金0.8u"MIN

Contact: Brass, 0.8u"MIN GOLD PLATING OVER ALL
30u" MIN NICKEL UNDERPLATING OVER ALL

2. 特性 (characteristics):

额定电流: 3 AMP

Raring Current: 3 AMP.

接触阻抗: 20 MΩ MAX.

Contact Resistance: 20 MΩ MAX.

绝缘阻抗: 1000 MΩ MIN.

Insulating Resistance: 1000 MΩ MIN.

耐电压: AC 500V.

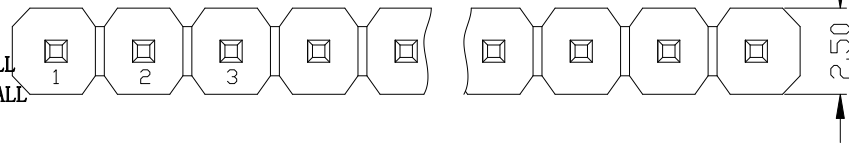
Withstanding Voltage: AC 500V.

温度范围: -40°C to+105°C

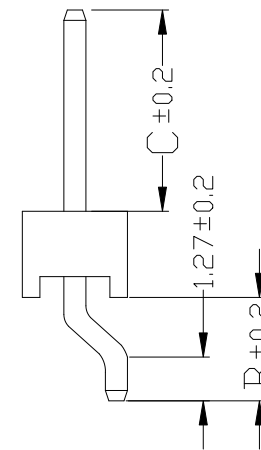
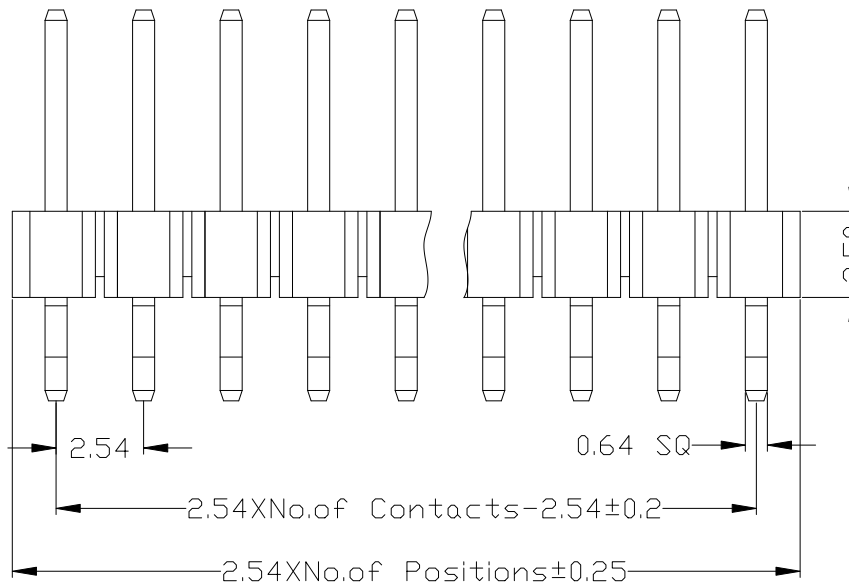
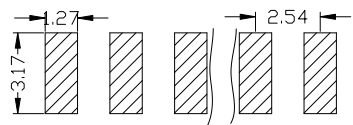
Temperture Range: -40°C to+105°C

Ordering Information

P125-11 XX XX X Z XXXA X



HEIGHT OF HOUSING 25:2.5mm	NO. OF PINS PER ROW 1~40P	Contact Plating Full Of Gold A0=0.8u" A1=1u" A2=1.5u" A3=2u" A4=3u" A5=5u" A6=10u" A7=15u" A8=20u" A9=30u"	Semi-gold B0=0.8U" B1=1U" B2=1.5U" B3=2U" B4=3U" B5=5U" B6=10U" B7=15U" B8=20U" B9=30U"	INSULATOR MATERIAL: B:PA6T C:PA9T D:LCP	LENGTH OF TERMINAL	PACKING A:PE Bag B:Tape & Reel C:Tube D:Tube+CAP E:Tray
		S1=Ordinary Tin Plated S2=Matte Tin Plated S3=Tin-plated High-temperature				



Dimension antitheses list		
ITEM	B	C
Standard	3.00	6.00
Alternate		

OPERATION		SCALE		Fit	
X.X	±0.25	UNIT		MM	
X.XX	±0.20	SIZE	A4	DESIGN	
X.XXX	±0.10	SHEET	1/1	CHECK	
Angle	±3°	PROJ.		APPROVE	
DIM	TOL				

上海高霖电子有限公司

卢小强	PART NO.	P125-11XXXXXZXXXX1
	TITLE:	2.54mm 单排针 塑高2.5 卧式SMT
	Customer No.	

REV	DATE	MODIFICATION DESCRIPTION	CHANGE	APPROVE

Specifications

备注 (Remark)

1. 材料 (MATERIAL)

胶芯: PA6T+30%G.F UL94V-0, 颜色: 黑色.

Housing: PA6T+30%G.F UL94V-0, Color: Black

四方针: 黄铜, 镍底30u"MIN, 表面镀金0.8u"MIN

Contact: Brass, 0.8u"MIN GOLD PLATING OVER ALL
30u" MIN NICKEL UNDERPLATING OVER ALL

2. 特性 (characteristics):

额定电流: 3 AMP

Raring Current: 3 AMP.

接触阻抗: 20 MΩ MAX.

Contact Resistance: 20 MΩ MAX.

绝缘阻抗: 1000 MΩ MIN.

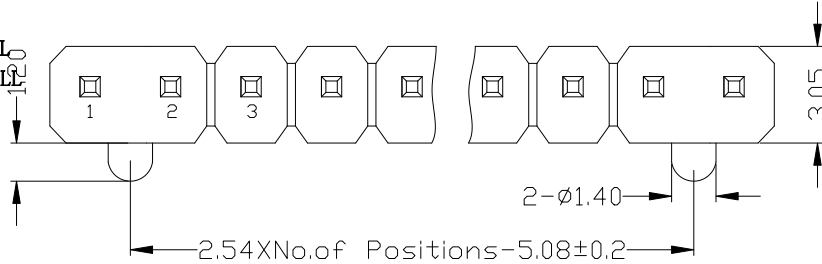
Insulating Resistance: 1000 MΩ MIN.

耐电压: AC 500V.

Withstanding Voltage: AC 500V.

温度范围: -40°C to +105°C

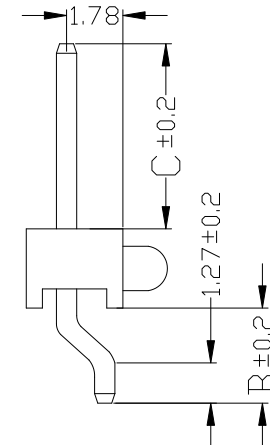
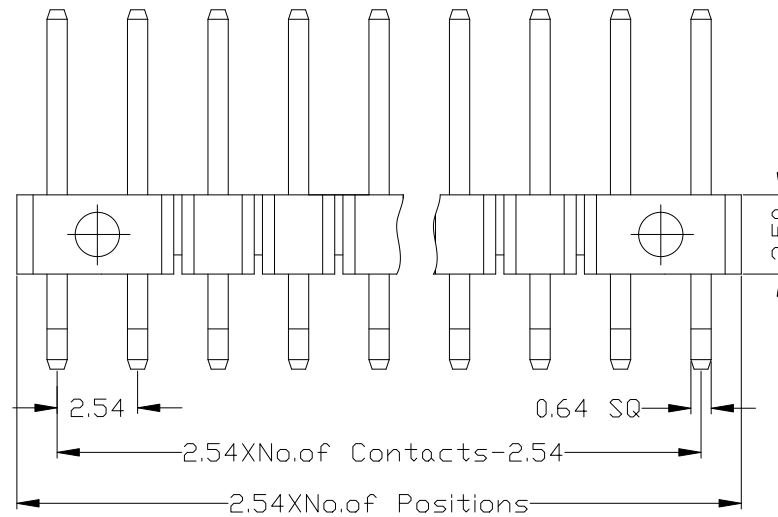
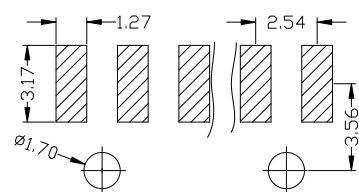
Temperture Range: -40°C to +105°C



Ordering Information

P125-11 XX XX X Z XXXA X

HEIGHT OF HOUSING 25:2.5mm	NO. OF PINS PER ROW 1~40P	Contact Plating Full Of Gold A0=0.8u" A1=1u" A2=1.5u" A3=2u" A4=3u" A5=5u" A6=10u" A7=15u" A8=20u" A9=30u"	Semi-gold B0=0.8u" B1=1u" B2=1.5u" B3=2u" B4=3u" B5=5u" B6=10u" B7=15u" B8=20u" B9=30u"	INSULATOR MATERIAL: B: PA6T C: PA9T D: LCP	LENGTH OF TERMINAL	PACKING A: PE Bag B: Tape & Reel C: Tube D: Tray+CAP E: Tray
		S1=Ordinary Tin Plated S2=Matte Tin Plated S3=Tin-plated High-temperature				



ITEM	B	C
Standard	3.00	6.00
Alternate		

上海高霖电子有限公司

				OPERATION		SCALE		Fit		上海高霖电子有限公司 卢小强 PART NO. P125-11XXXXXZXXXX2 TITLE: 2.54mm 单排针 塑高2.5 卧式SMT 带侧柱 Customer No.						
				X.X	±0.25	UNIT		MM								
				X.XX	±0.20	SIZE	A4	DESIGN								
				X.XXX	±0.10	SHEET	1/1	CHECK								
				Angle	±3°	PROJ.	☉	APPROVE								
REV	DATE	MODIFICATION DESCRIPTION		CHANGE	APPROVE	DIM	TOL									

Specifications

备注 (Remark)

1. 材料 (MATERIAL)

胶芯: PA6T+30%G.F UL94V-0, 颜色: 黑色.

Housing: PA6T+30%G.F UL94V-0, Color: Black

四方针: 黄铜, 镍底30u"MIN, 表面镀金0.8u"MIN

Contact: Brass, 0.8u"MIN GOLD PLATING OVER ALL
30u" MIN NICKEL UNDERPLATING OVER ALL

2. 特性 (characteristics):

额定电流: 3 AMP

Raring Current: 3 AMP.

接触阻抗: 20 MΩ MAX.

Contact Resistance: 20 MΩ MAX.

绝缘阻抗: 1000 MΩ MIN.

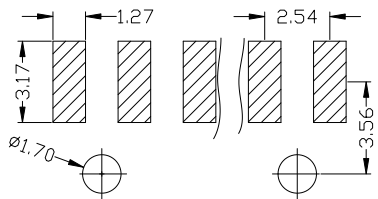
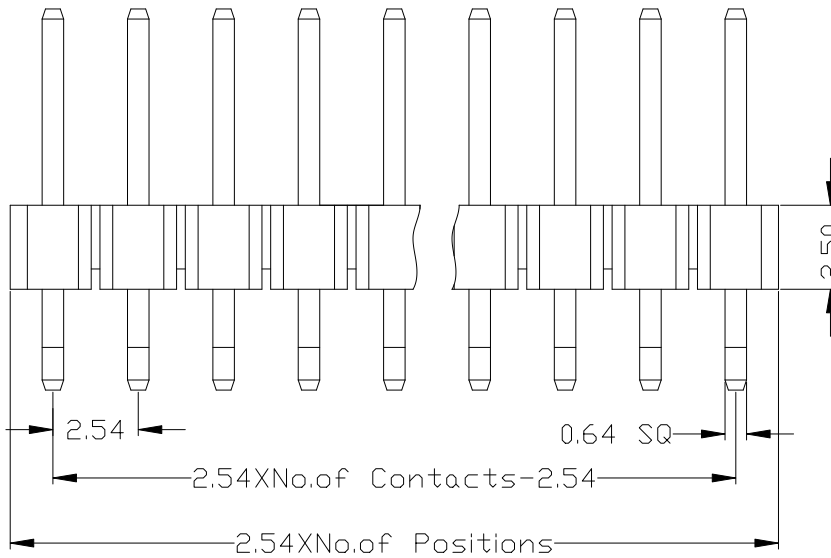
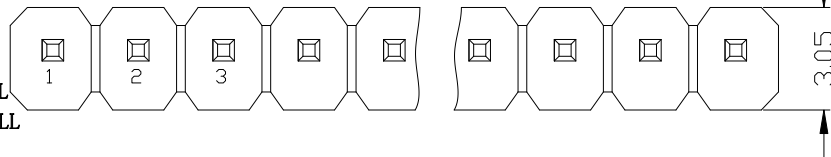
Insulating Resistance: 1000 MΩ MIN.

耐电压: AC 500V.

Withstanding Voltage: AC 500V.

温度范围: -40°C to +105°C

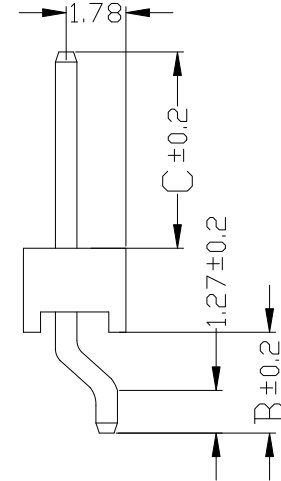
Temperture Range: -40°C to +105°C



Ordering Information

P125-11 XX XX X Z XXXA X

HEIGHT OF HOUSING 25:2.5mm	NO. OF PINS PER ROW 1~40P	Contact Plating Full Of Gold A0=0.8u" A1=1u" A2=1.5u" A3=2u" A4=3u" A5=5u" A6=10u" A7=15u" A8=20u" A9=30u"	Semi-gold B0=0.8U" B1=1U" B2=1.5U" B3=2U" B4=3U" B5=5U" B6=10U" B7=15U" B8=20U" B9=30U"	INSULATOR MATERIAL: B:PA6T C:PA9T D:LCP	LENGTH OF TERMINAL	PACKING A:PE Bag B:Tape & Reel C:Tube D:Tube+CAP E:Tray
-------------------------------	------------------------------	---	---	--	--------------------	--



ITEM	B	C
Standard	3.00	6.00
Alternate		

上海高霖电子有限公司

OPERATION		SCALE		Fit	
X.X	±0.25	UNIT		MM	
X.XX	±0.20	SIZE	A4	DESIGN	卢小强
X.XXX	±0.10	SHEET	1/1	CHECK	
Angle	±3°	PROJ.		APPROVE	
DIM	TOL				

PART NO.	P125-11XXXXXZXXXX3	
TITLE:	2.54mm 单排针 塑高2.5 卧式SMT 带侧柱	
Customer No.		

REV	DATE	MODIFICATION DESCRIPTION	CHANGE	APPROVE
-----	------	--------------------------	--------	---------

